



Partially painted, parged stucco West Facade at Property Line / Parking



East Facade (exposed brick) on property line at Parking Lot



211 Mechanic Street - South Facade



East Facade (exposed brick) and stucco at upper level - partial elevation



Partially painted, parged stucco West Facade at Property Line / Parking Lot



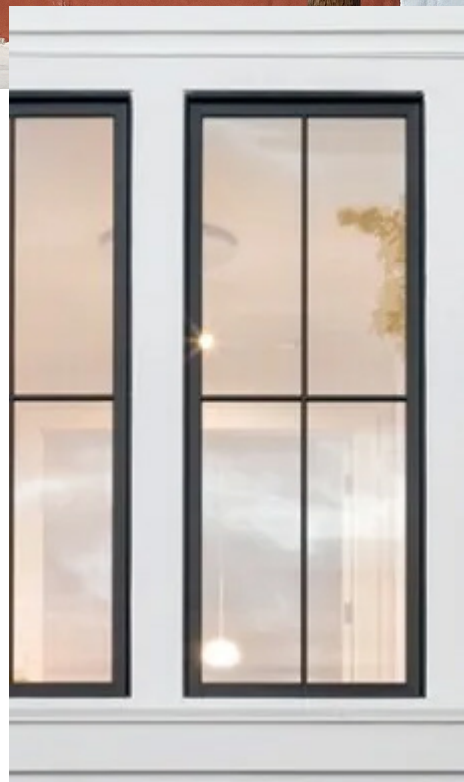
Proper meeting rail and simulated divided lite profiles at windows.



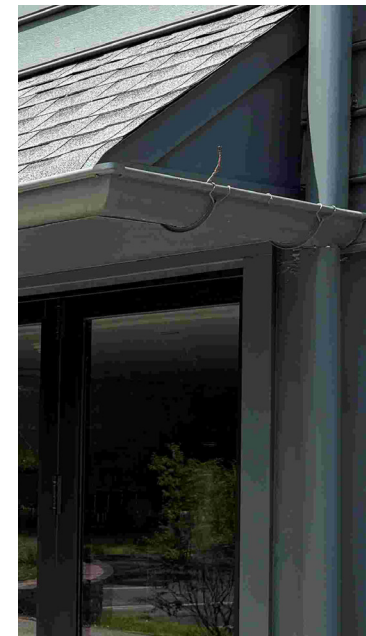
Three-part sanded portland cement based stucco



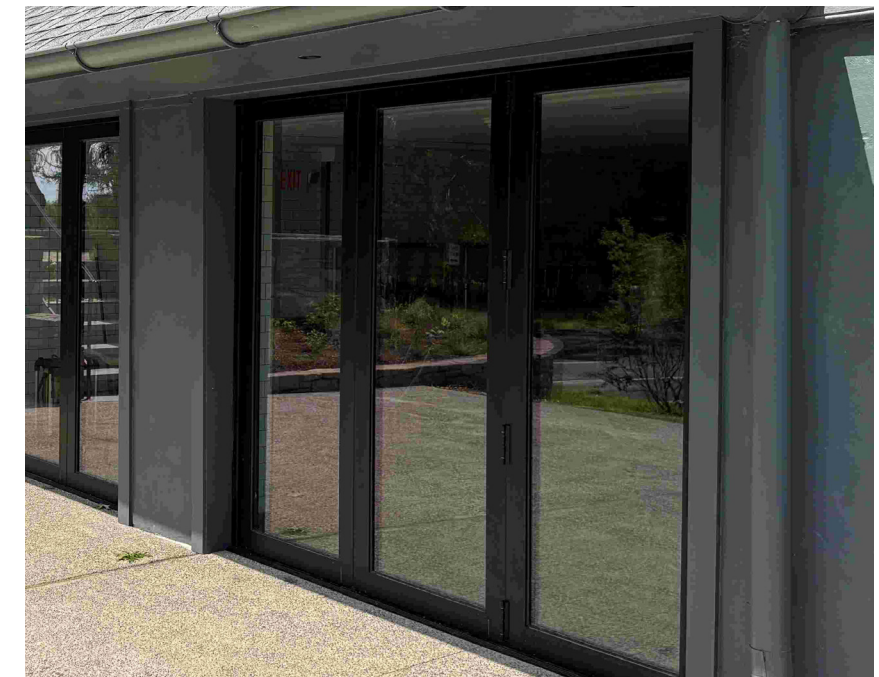
Gun metal gray window trim and metal finishes (typ.)



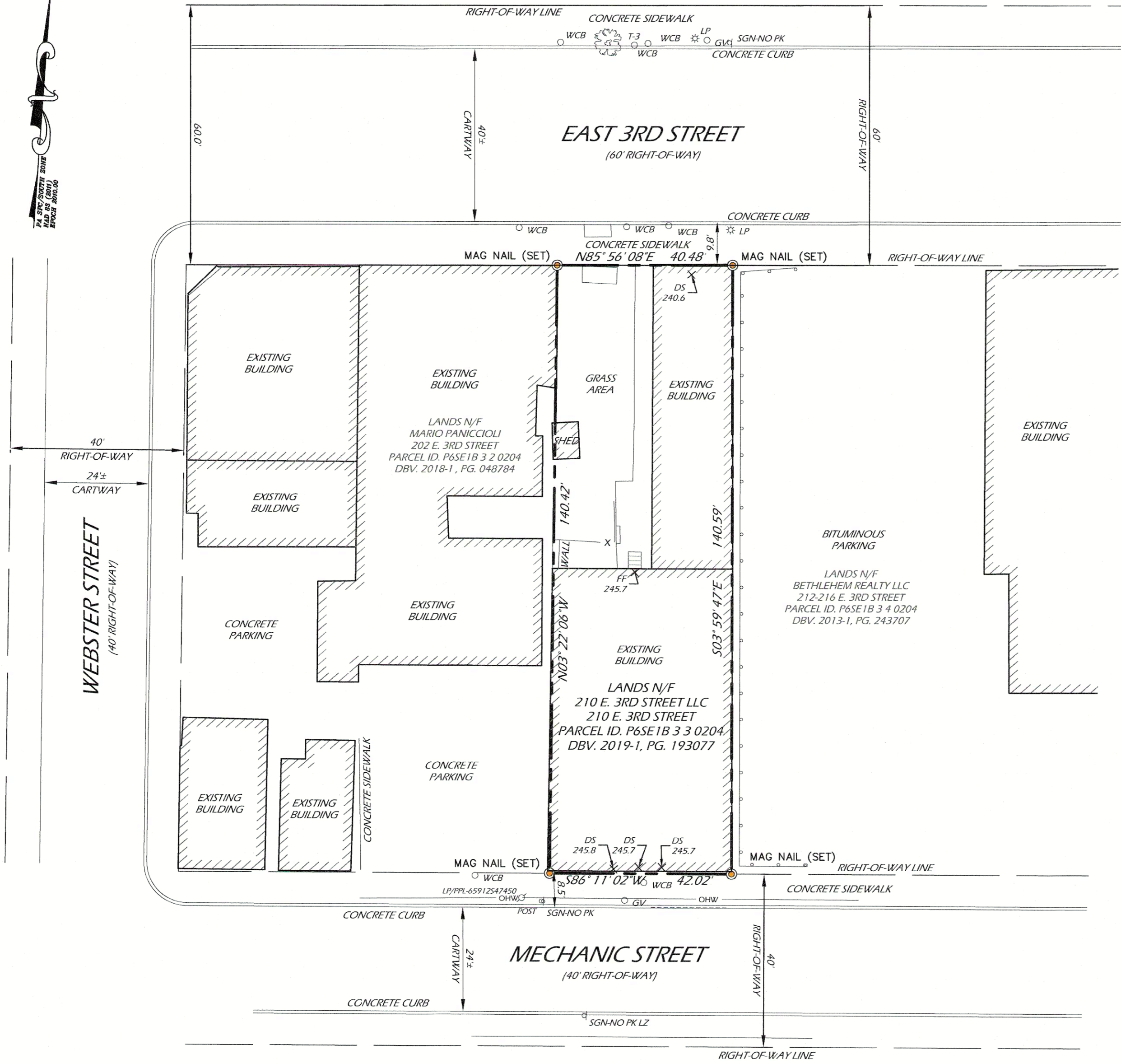
Marvin double hung Elevate series fiberglass windows to match existing double hung window profiles with simulated divided lite w/ exterior applied muntin bar profile



Smooth round downspouts and 1/2 round gutters (typ.)



Proposed interior folding storefront at existing garage opening by Solar Innovations or similar - matching finish Thermally broken aluminum system with insulated glass



SITE DATA:

OWNER: 210 EAST 3RD STREET LLC.
6081 WEST HAMILTON STREET SUITE 600
ALLENTOWN, PA 18106

PROPERTY LOCATION: 210 EAST 3RD STREET
BETHLEHEM, PA 18015

DEED: BOOK 2019-1, PAGE 193077

PARCEL ID: P6SE1B 3 3 0204

PARCEL AREA: 5,795 SQ. FT. / 0.1330 ACRES

TAX AUTHORITY: CITY OF BETHLEHEM

WATER: PUBLIC
SEWER: PUBLIC

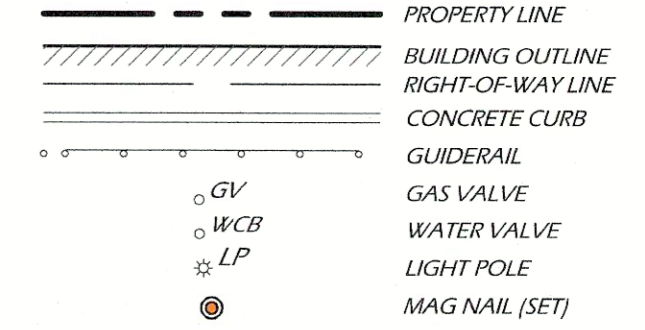
SURVEY REFERENCES:

1. PLAN ENTITLED "PLAN SHOWING MINOR SUBDIVISION OF TAYLOR STREET LOT ON LANDS OF BETHLEHEM STEEL CORPORATION" AS PREPARED BY KEYSTONE CONSULTING ENGINEERS, DATED APRIL 18, 2000, LATEST REVISION DATED MAY 10 2000, RECORDED IN THE NORTHAMPTON COUNTY RECORDER OF DEEDS OFFICE AS DOCUMENT VOL. 2000-5 PG. 202.

NOTES:

1. DATE OF SURVEY: MAY 22, 2025 & JUNE 17, 2025.
2. THE PROPERTY MAY BE SUBJECT TO ANY EASEMENTS, RIGHTS OF WAY, RESTRICTIONS, ETC. THAT ARE NOT NECESSARILY SHOWN ON THIS PLAN.
3. HORIZONTAL DATUM: PENNSYLVANIA STATE PLANE COORDINATE SYSTEM, SOUTH ZONE, NAD83 (2011) EPOCH 2010.00.
4. A TITLE SEARCH HAS NOT BEEN FURNISHED TO THE SURVEYOR.

LEGEND

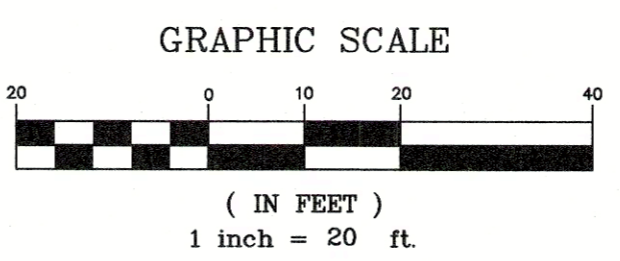
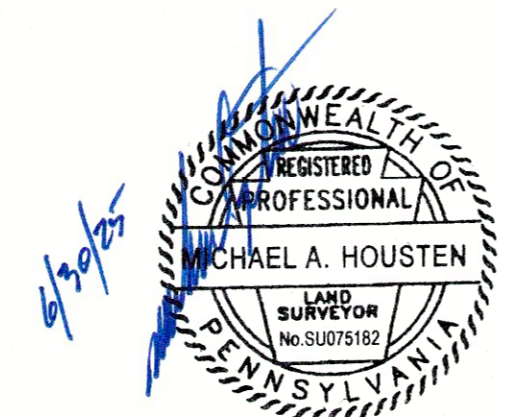


ABBREVIATIONS:

DS DOOR SILL
FF FIRST FLOOR

PLAN OF PROPERTY

PLAN DATE 06/27/2025	PROJECT 210 EAST 3RD STREET	DEED REF. DBV. 2019, PG. 193077
REVISIONS	OWNER 210 EAST 3RD STREET LLC	TAX MAP P6SE1B 3 3 0204
	MUNICIPALITY CITY OF BETHLEHEM	SHT. NO. 1 of 1
	COUNTY NORTHAMPTON COUNTY	SCALE AS NOTED
	STATE PENNSYLVANIA	JOB NO. 7395
<p>AASA Arthur A. Swallow Associates, LLC Land Surveyors www.aasurvey.com</p>		<p>Michael A. Housten, PLS PA SU075182</p>



210 East Third Street, LLC
209-211 Mechanic Street
Bethlehem, PA 18015-1709



BRETT WEBBER ARCHITECTS, PC
40 SOUTH 4TH ST. SUITE C
EASTON, PA 18042
T: 215.568.9751
www.bwadesign.com

NO.	DATE	ISSUE

DISCIPLINE

DRAWN BY: BW

CHECKED BY: BW

PROJECT NO. 25004

SCALE AS NOTED

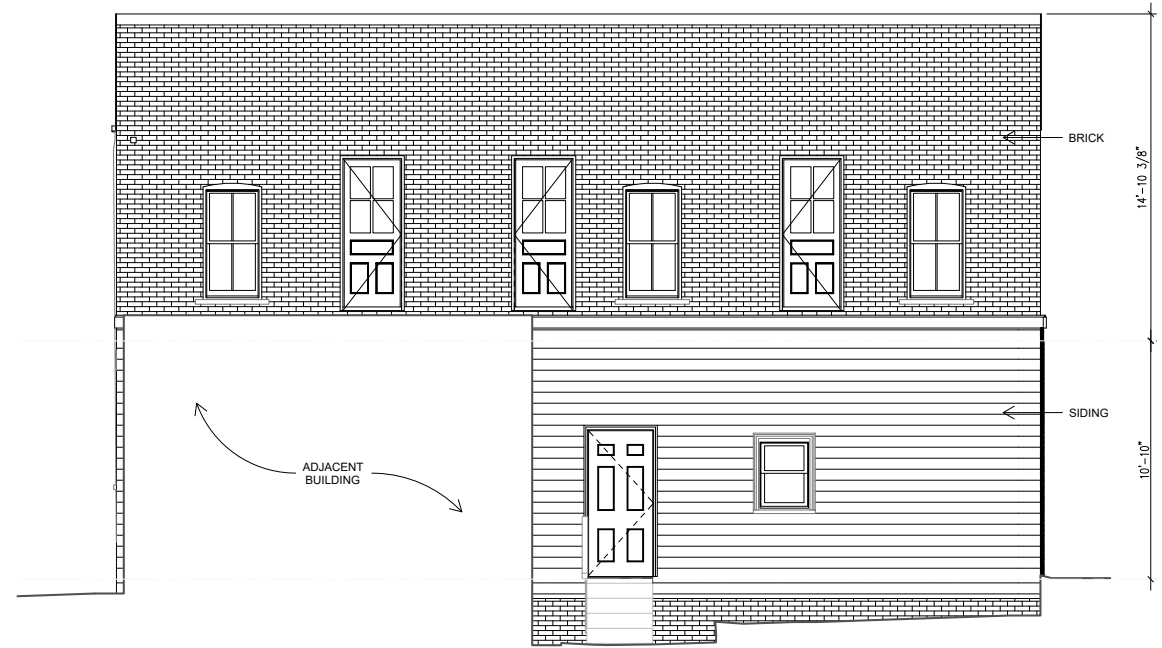
DRAWING TITLE

EXIST'G / DEMO ELEVATIONS

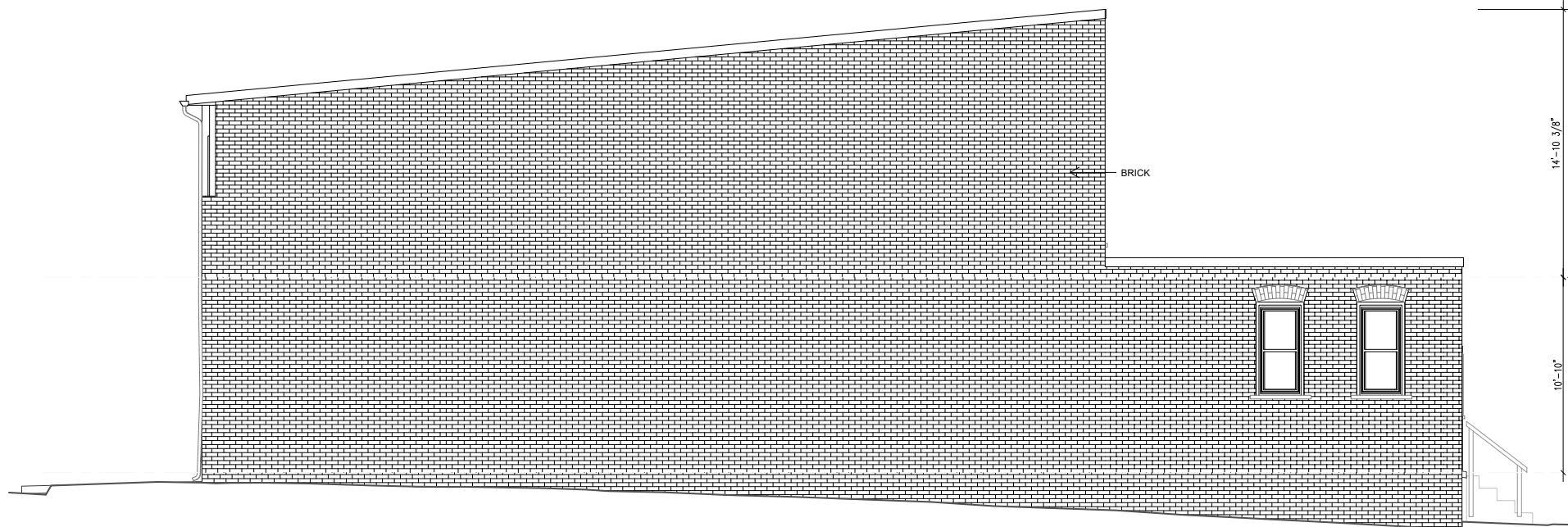
DRAWING NO.



1
A301D
EXIST'G SOUTH ELEV.
SCALE: 1/4" = 1'-0"



2
A301D
EXIST'G NORTH ELEV.
SCALE: 1/4" = 1'-0"



3
A301D
EXIST'G EAST ELEV.
SCALE: 1/4" = 1'-0"

PAINTED
210 East Third Street, LLC
209-211 Mechanic Street
Bethlehem, PA 18015-1709



BRETT WEBBER ARCHITECTS, PC
40 SOUTH 4TH ST. SUITE C
EASTON, PA 18042
T: 215.568.9751
www.bwadesign.com

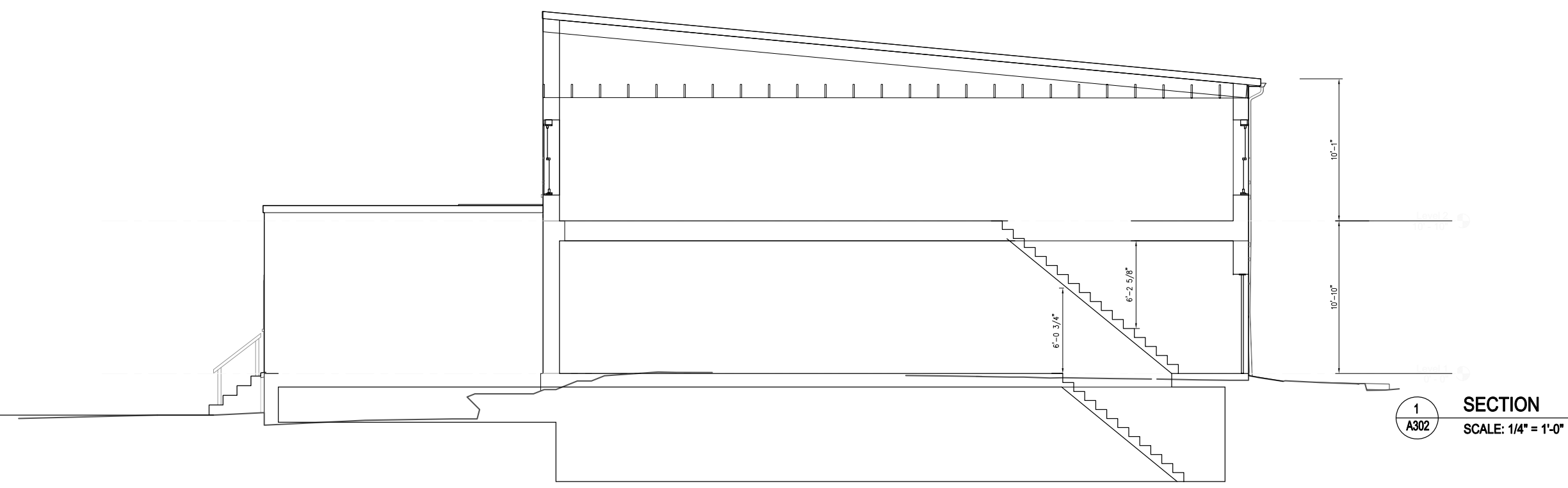
NO.	DATE	ISSUE

DISCIPLINE

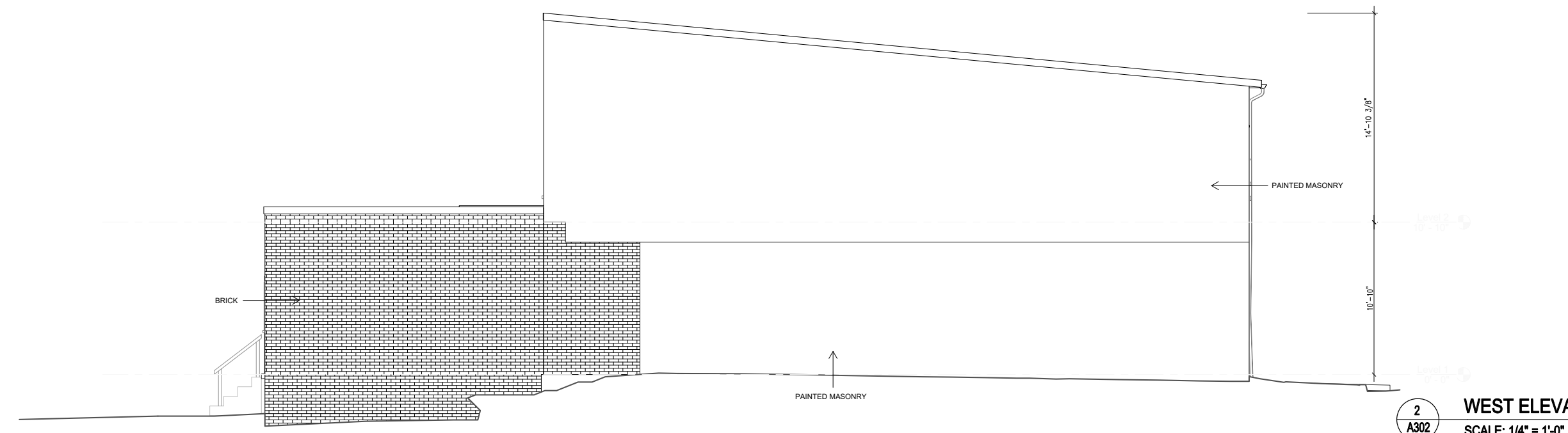
DRAWN BY: BW CHECKED BY: BW

PROJECT NO. 25004 SCALE AS NOTED

DRAWING TITLE
BLDG SECTION AND ELEVATION



1 SECTION
SCALE: 1/4" = 1'-0"



2 WEST ELEVATION
SCALE: 1/4" = 1'-0"