









APARTMENT BUILDING	UNIT TYPE	QUANTITY	MX	GSF
FIFTH FLOOR	RESTAURANT	21X6 SF		11,556 SF COURT/YARD
	ONE BEDROOM	2 UNITS		LOBBY + FITNESS
	AMENITY	1,050 SF		
SECOND THRU FOURTH FLOOR		4 UNITS X 2 = 8 UNITS		11,640 SF
	TWO BEDROOM	4 UNITS X 2 = 8 UNITS		
FIFTH FLOOR	ONE BEDROOM	6 UNITS		11,420 SF
	TWO BEDROOM	3 UNITS		860 SF TERRACES
	AMENITY	21 UNITS		ROOF TERRACE + ROOM
	TOTAL ONE BEDROOM	42 UNITS		
	TOTAL TWO BEDROOM	27 UNITS		
	TOTAL UNITS	69 UNITS		
	TOTAL BUILDING SF			57,100 SF
	TOTAL TERRACES SF			150 SF

ASSUMED BUILDING HEIGHT: 15 - 660 SF HEIGHT  
 ASSUMED BUILDING AREA: 1000 SF PROVIDED (NOT INCLUDING TERRACE)  
 TOTAL AREA: 44 X 10 = 440 SF HEIGHT  
 713 SF PROVIDED



① FIFTH FLOOR PLAN  
SCALE: 1/8" = 1'-0"



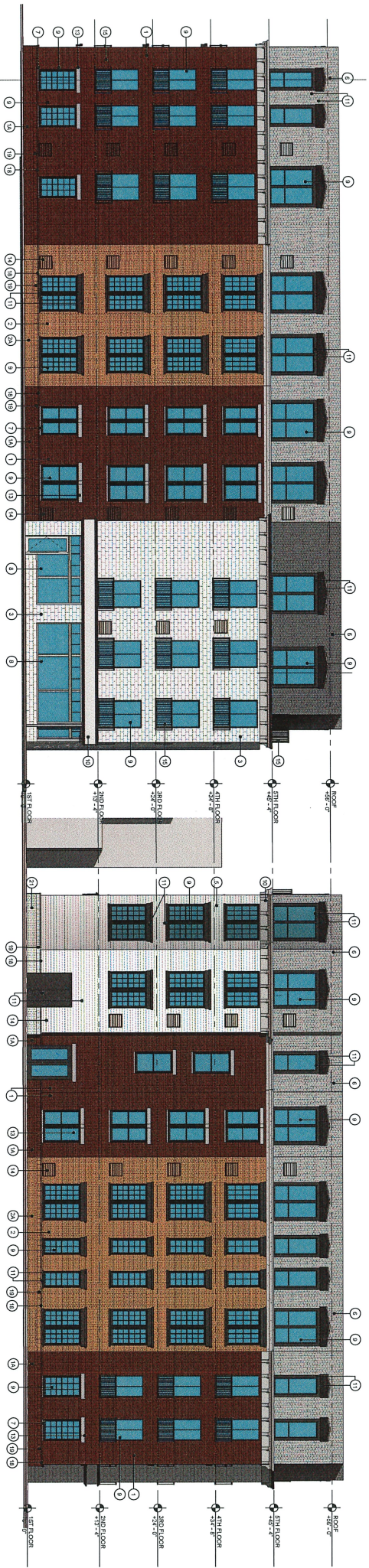
3RD AND TAYLOR APARTMENTS  
PERON DEVELOPMENT

FIFTH FLOOR PLAN  
SCALE: As Indicated



**A WEST ELEVATION**  
SCALE: 1/8" = 1'-0"

**B NORTH ELEVATION**  
SCALE: 1/8" = 1'-0"



**C SOUTH ELEVATION**  
SCALE: 1/8" = 1'-0"

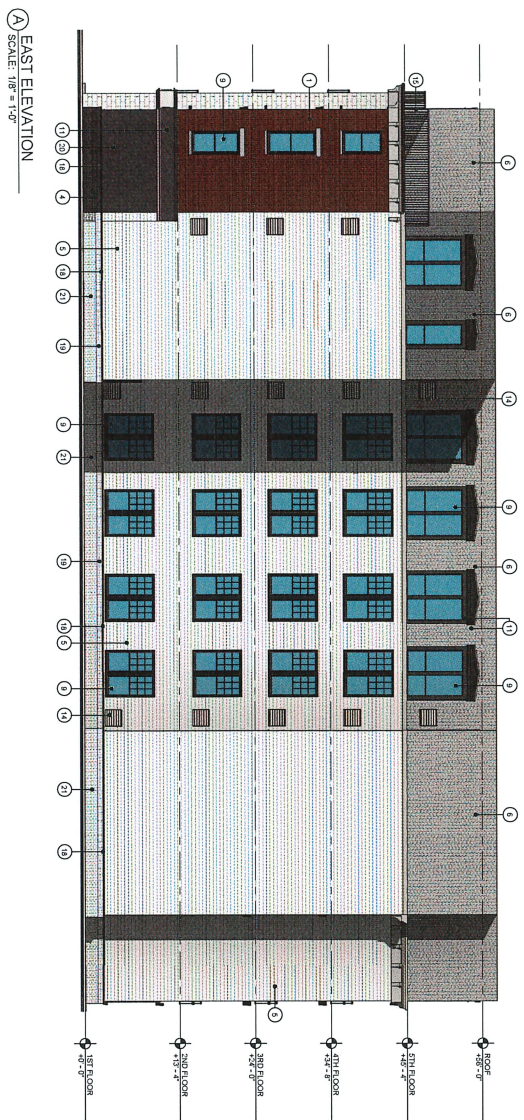
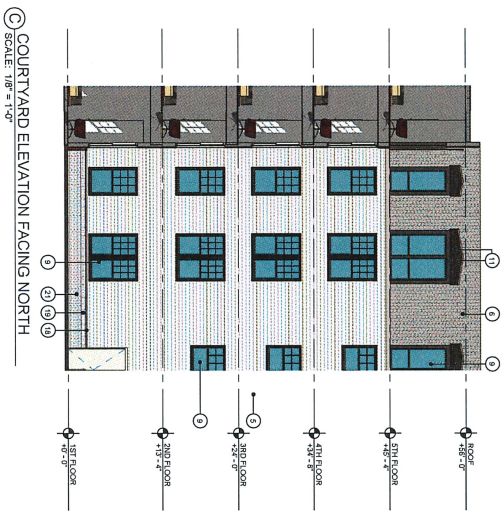
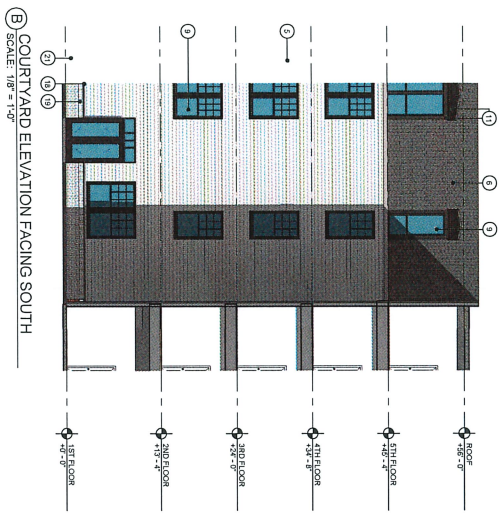


ITEM NO.	MATERIAL	BASE OF DESIGN	STYLE	COLOR
1	THIN BRICK VENEER	WATSON/TOWN BRICK	-	BRANDFORD TYPE 2
2	FALL BED BRICK VENEER	WATSON/TOWN BRICK	-	BRANDFORD TYPE 2
3	THIN BRICK VENEER	WATSON/TOWN BRICK	-	BRANDFORD TYPE 2
4	FALL BED BRICK VENEER	WATSON/TOWN BRICK	-	BRANDFORD TYPE 2
5	CAST STONE VENEER	FAHSE CAST STONE	17" X 24"	WHITE
6	FALL BED BRICK VENEER	PACIFIC CLAY	-	SPOT SMOOTH
7	THIN BRICK VENEER	JAMES HANDBE	-	WHITE
8	FALL BED BRICK VENEER	JAMES HANDBE	-	SPOT SMOOTH
9	PRECAST CONCRETE	JAMES HANDBE	-	SPOT SMOOTH
10	PRECAST CONCRETE	JAMES HANDBE	-	SPOT SMOOTH
11	PRECAST CONCRETE	JAMES HANDBE	-	SPOT SMOOTH
12	PRECAST CONCRETE	JAMES HANDBE	-	SPOT SMOOTH
13	PRECAST CONCRETE	JAMES HANDBE	-	SPOT SMOOTH
14	PRECAST CONCRETE	JAMES HANDBE	-	SPOT SMOOTH
15	PRECAST CONCRETE	JAMES HANDBE	-	SPOT SMOOTH
16	PRECAST CONCRETE	JAMES HANDBE	-	SPOT SMOOTH
17	PRECAST CONCRETE	JAMES HANDBE	-	SPOT SMOOTH
18	PRECAST CONCRETE	JAMES HANDBE	-	SPOT SMOOTH
19	PRECAST CONCRETE	JAMES HANDBE	-	SPOT SMOOTH
20	PRECAST CONCRETE	JAMES HANDBE	-	SPOT SMOOTH



3RD AND TAYLOR APARTMENTS  
PERON DEVELOPMENT

EXTERIOR ELEVATIONS  
SCALE: 1/8" = 1'-0"



EXTERIOR MATERIAL LEGEND			
ITEM NO.	MATERIAL	BASE OF DESIGN	STYLE
1	THIN BRICK VENEER	WATSON TOWN BRICK COMPANY	BRADFORD TYPE 2
2	FULL BED BRICK VENEER	WATSON TOWN BRICK COMPANY	BRADFORD TYPE 2
3	THIN BRICK VENEER	BELDEN	BELCHERT 300
4	FULL BED BRICK VENEER	BELDEN	BELCHERT 300
5	CRAFT STONE VENEER	PACIFIC CRAFT STONE	12" X 24"
6	FULL BED BRICK VENEER	PACIFIC CLAY	WHITE
7	FIBER CEMENT SOUND	JAMES HARDIE	STATIONARY SPOT SMOOTH
8	FIBER CEMENT	JAMES HARDIE	WHITE
9	SCALLOP SOUND	JAMES HARDIE	MOISTURE RESISTANT
10	PRECAST SILL	YORKMANER	UNCOLORED
11	STONEFRONT SYSTEM	YORKMANER	BLACK
12	COMPOSITE FIBERGLASS WINDOW	ANDERSEN	100 SERIES
13	MOULDED SFT TRIM	AKER	WHITE
14	MOULDED SFT TRIM	AKER	BLACK
15	FIBER CEMENT TRIM	-	-
16	PRECAST LATEL	-	-
17	ALUMINUM COVER	-	TOMATCH ADJUSTMENT
18	ALUMINUM RAILING	-	BLACK
19	ALUMINUM SCUPPER	-	-
20	ALUMINUM GUTTER	-	-
21	BRICK ROWLOCK COURSE	-	WATSON ADJUSTMENT
22	BRICK SOLICER COURSE	-	ADJUSTMENT
23	FIBER CEMENT PANELS	JAMES HARDIE	MOISTURE RESISTANT
24	FULL BED BRICK VENEER	STANISLALE	IRON GRAY
25	FULL BED BRICK VENEER	STANISLALE	CHAR BRICK



① SOUTH ELEVATION - E 3RD ST  
SCALE: 1/8" = 1'-0"



3RD AND TAYLOR APARTMENTS  
PERON DEVELOPMENT

SOUTH ELEVATION - E 3RD ST

SCALE: 1/8" = 1'-0"



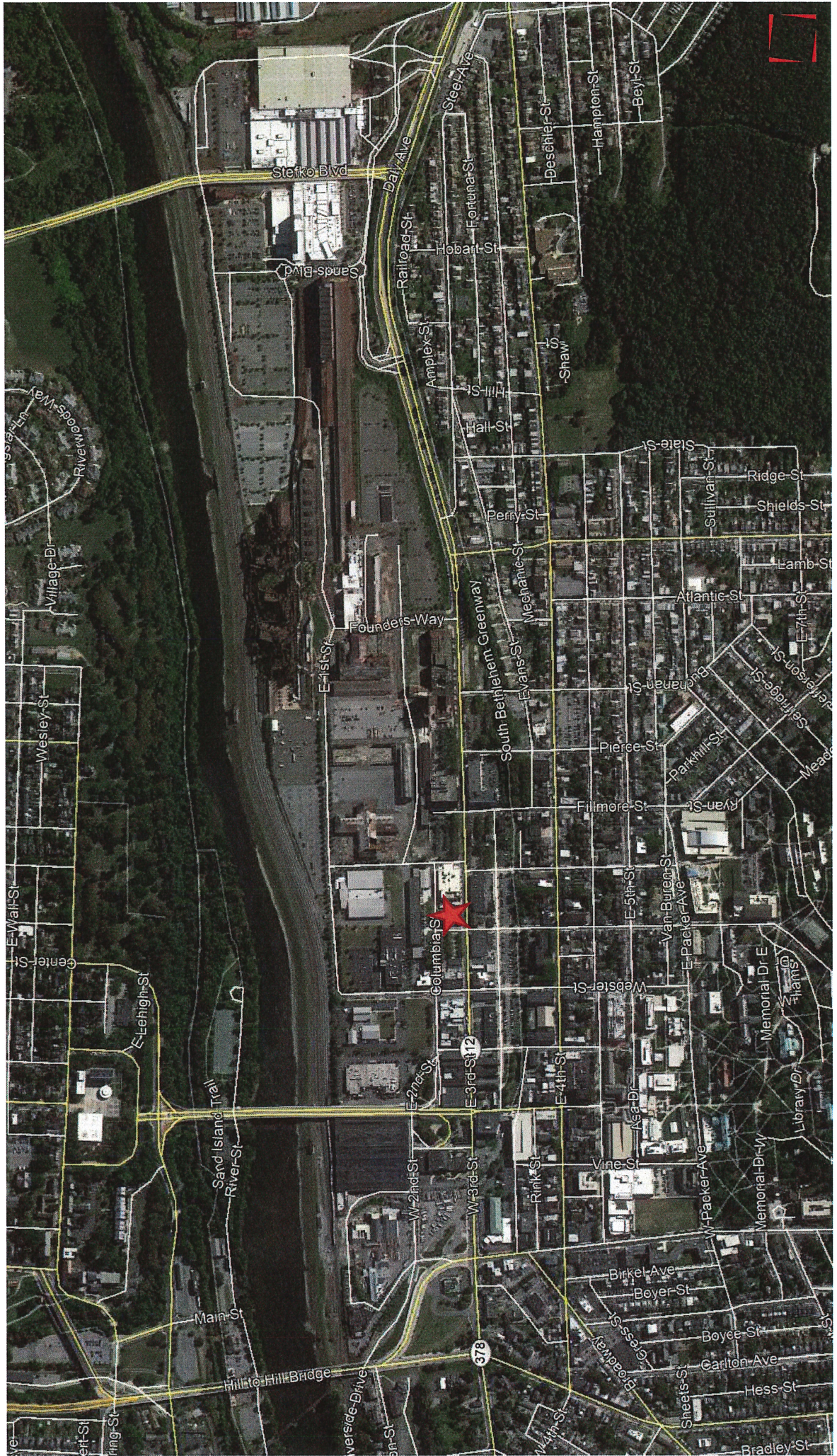


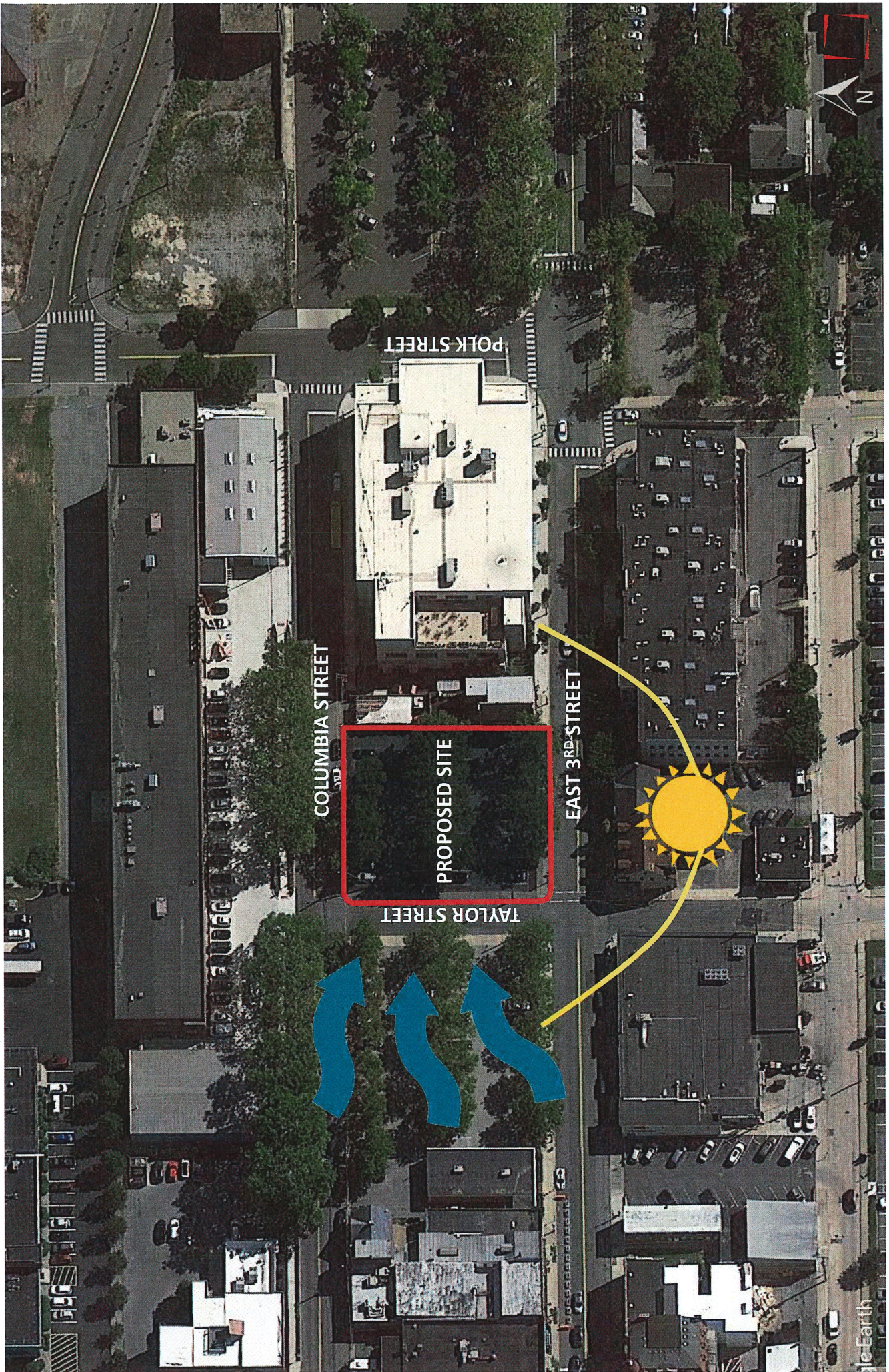
City of Bethlehem  
3<sup>rd</sup> and Taylor Apartments

USA Architects



# Site Location





POLK STREET

COLUMBIA STREET

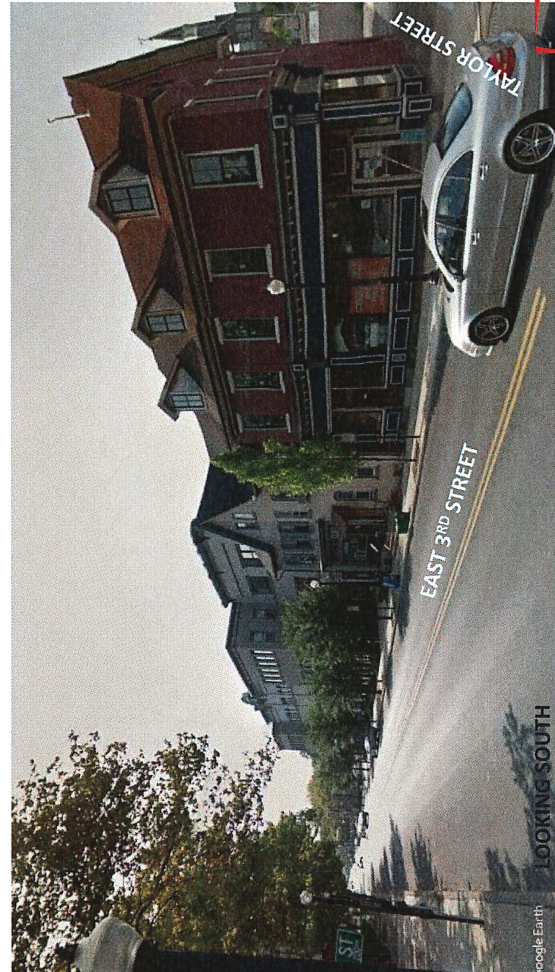
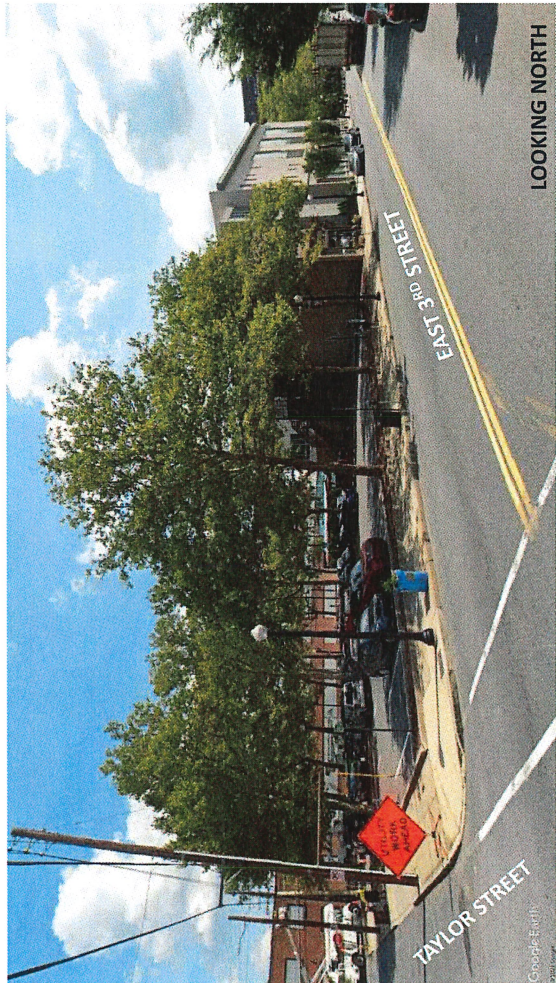
PROPOSED SITE

TAYLOR STREET

EAST 3RD STREET

N

# Current Conditions

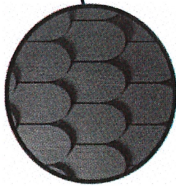


# Current Conditions

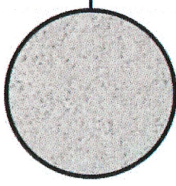


# Proposed Views

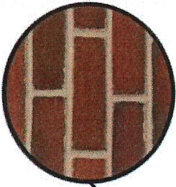
**JAMES HARDIE**  
HALF-ROUND SIDING  
NIGHT GRAY,  
PEARL GRAY BLEND



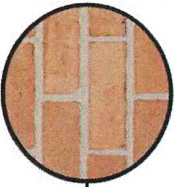
**FADDIS CAST STONE**  
WHITE



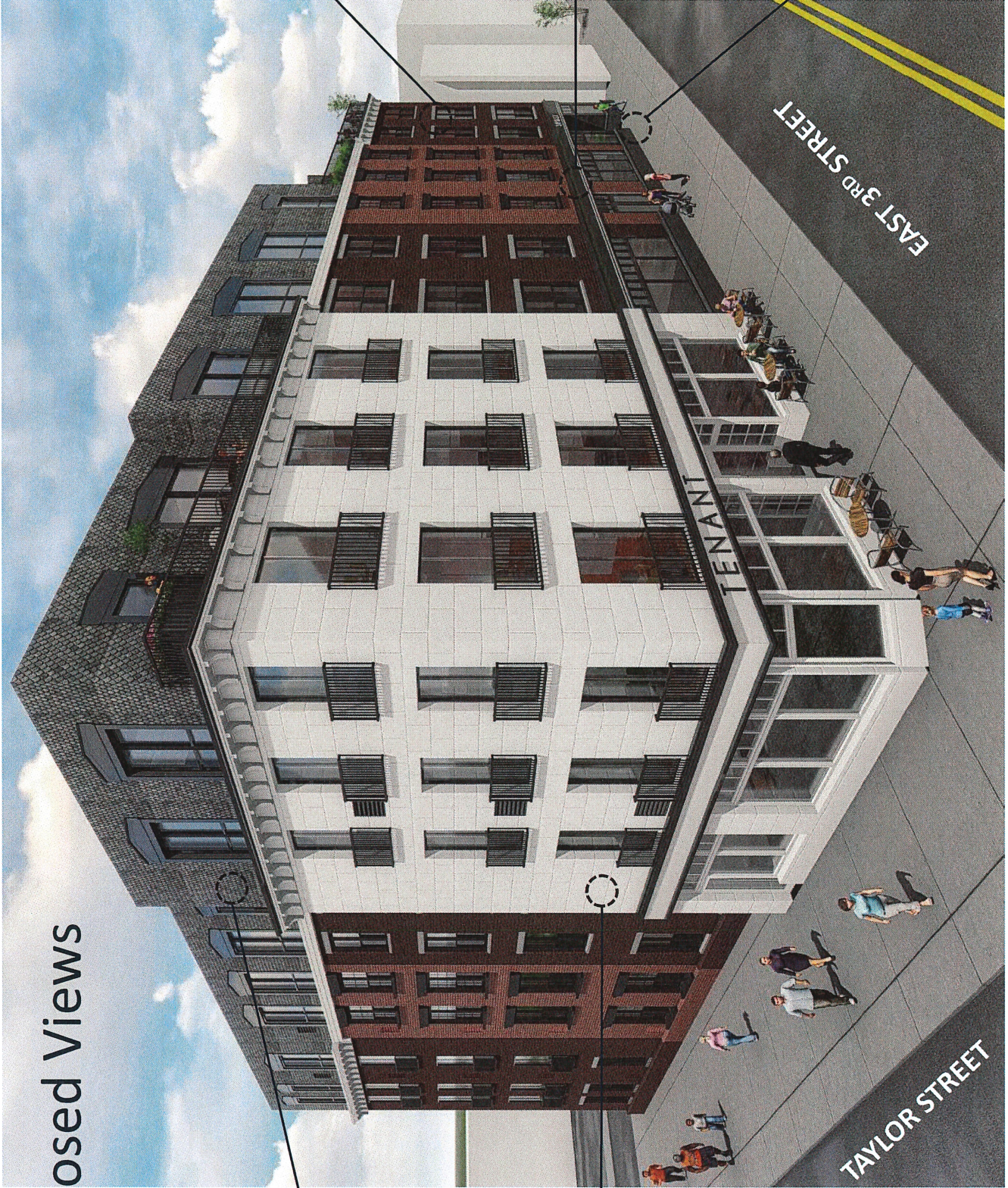
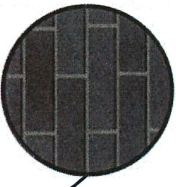
**WATSONTOWN**  
**BRICK COMPANY**  
BRADFORD TYPE 2



**BELDEN BRICK**  
BELCREST 330



**PACIFIC CLAY BRICK**  
DARK IRON SPOT  
SMOOTH

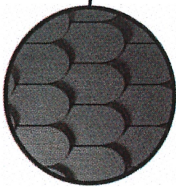


# Proposed Views

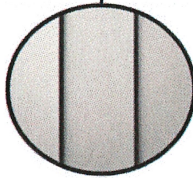


# Proposed Views

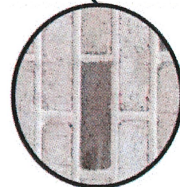
**JAMES HARDIE**  
HALF-ROUND SIDING  
NIGHT GRAY,  
PEARL GRAY BLEND



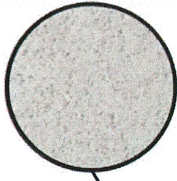
**JAMES HARDIE**  
FIBER CEMENT LAP  
SIDING - SMOOTH  
ARTIC WHITE



**STATESVILLE BRICK**  
CASA BLANCA



**FADDIS CAST STONE**  
WHITE



**WATSONTOWN  
BRICK COMPANY**  
BRADFORD TYPE 2



**BELDEN BRICK**  
BELCREST 330

