

Explore Bethlehem Recreation Dept. Spring 2017 Newsletter

THE ANNUAL EASTER EGG HUNT



Every spring the City of Bethlehem Recreation department hosts the annual Easter Egg Hunt for City of Bethlehem youth. This year's event will be held on the lawn in front of Memorial Pool on Illick's Mill Road on Saturday, April 8th at 10am. The annual event is for **Bethlehem Residents only** that are between the ages of 3 and 8 years old. For more information, call the Recreation Office at 610-865-7081. As a reminder to **ALL PARENTS**, please do not pick up candy for your children, there is plenty of candy for everyone!

BOUNCE BACK

Bubble Soccer returns to the City of Bethlehem on Saturday, May 6th. The event will start at 10am on the grass field at Main and Spring Sts. Teams will be able to register online or in the Parks Dept at City Hall. For more information, email Mark Atkinson at: matkinson@bethlehem-pa.gov



COAT DRIVE 2016

During the winter months of 2016, the Recreation Dept. held a coat drive at City Hall and at the Municipal Ice Rink. The Coat Drive was to benefit the 750 plus families that the Northeast Ministry serves. With the community's help, we collected just under 1000 coats! Thank you to everyone who donated coats!

sports

BETHLEHEM GOLF CLUB

Golf season is right around the corner. Now is the time to fine-tune your swing with our golf pros over at the Bethlehem Golf Club. Coupled with the indoor driving range, the Bethlehem Golf Course also features a Flightscope 3-d Doppler Launch Monitor. The Flightscope provides real-time data on your swing, club face angle, ball rotation, impact angle, swing plane, distance and a host of other golfing benefits!

Call today to reserve the room by yourself or to schedule a lesson with one of our highly experienced golf pros.

Paul Viola, Director of Golf, PGA 610-691-9393

pviola@bethlehem-pa.gov

Mark Csencsits, PGA 610-428-3434

Eric Cogorno, PGA 610-703-5520

<http://www.bethlehemgc.com>

SAND ISLAND TENNIS

Located on Historic Sand Island, the City of Bethlehem's Public Tennis Courts are truly unique - featuring a Clubhouse and Eight Har-Tru (Clay) Tennis Courts with an underground watering system that ensures consistent play through-out our Summer Season. Whether you need a few lessons, are a casual player, or enjoy the competitiveness of a league, Sand Island has it all for young and old. Season passes and daily rates are available.

Our 2017 season officially opens on Saturday, May 27. The deadline for signing up for the summer leagues is Friday, May 19th. Junior programs start the week of June 19th with clinics, match play, and travel team. Adult clinics and private lessons will be available. Come out and enjoy one of Bethlehem's treasures.



YOUTH SPORTS

For the youth of Bethlehem, there is a wide range of sports organizations. Each youth organization is managed independently from the City of Bethlehem but utilizes the City's facilities. Youth athletics are an integral part in child development and help build character later in life.

There are 6 Little Leagues serving Bethlehem. Participants must register with the league that is closest to their residence.

The leagues offer baseball and softball and are open to boys and girls ages 5-16. For more information about the league, sign up dates, locations, please contact the individual leagues.

City Line L. L.

Keith Kullman

484-894-9148

keithkullman.city@gmail.com

Lehigh L. L.

Gene Ashner 610-691-5234

Keith Ashner

www.lehighlittleleague.org

North Central L. L.

TJ Herstitch

484-515-6675

www.eteamz.com/

NCLLBethlehem/

North East L. L.

Amy Young

610-865-9287

www.eteamz.com/

NortheastLL/

North West L. L.

Mike McGraw

484-554-4321

www.eteamz.com/

nyaa/

Southside L. L.

Jose Gonzales

610-867-219

ADULT RECREATION SPORTS

As spring rolls around, it is time to start thinking of warmer weather. With the warm weather comes picnics, barbecues, and outdoor sports. The City of Bethlehem Recreation Department operates two summer leagues for adults, slo-pitch softball and adult basketball. For more information about these leagues, please contact the Recreation Office at 610-865-7081.

summer SUMMER FUN

The City of Bethlehem's Annual Summer Day Camp will continue this summer at the Ice Rink on Illick's Mill Road. The Camp is for boys and girls ages 7-12 and will run Monday through Friday from 10AM to 3PM. There are four 2-week sessions which begin June 19th. The cost is \$175 per session. Activities include swimming, arts & crafts, sports, games, & special events. Children must bring their own lunch. Swimming lessons at Memorial Pool are also part of the daily activities.

Our playground programs at various city parks open June 19th to August 4th and are held at various parks throughout the city. All kids are welcome. Children under the age of 8 must be accompanied by an older sibling (at least 12 yrs old). Children will participate in games, arts & crafts, field trips, swimming, and much more. There are morning and evening sessions available.

CITY POOLS

The City of Bethlehem operates 5 public pools and there is a good chance you live near one. Pools will open for the summer on June 10th. With reasonable daily rates and season passes, there is nothing like cooling off in a pool during the dog days of summer. Pool hours and rates vary by location.

Swimming lessons start June 19 and are for pre-school (ages 4-5) and youth (6-up) in a group format and are \$60 per session. Each session is 2 weeks long. Adult, semi-private, and private lessons are also available based on request. Class sizes are limited, so registrations are on a first come, first serve basis.

For more information, dates, and availability, please call the Recreation Office at 610-865-7081 or visit our website:

www.bethlehem-pa.gov/parks

BETHLEHEM



ADVENTURE CAMP

This year marks the 10th year of our Adventure Camp collaboration with DCNR and Wildlands Conservancy. This camp provides the opportunity for City of Bethlehem Youth to experience fun and educational activities outside!

The camp will be held June 12-16 and is for City of Bethlehem Residents, ages 13-15. Kids will go biking, rock climbing, and rafting, fishing, and archery. Space is extremely limited and fills up fast. Please email Mark Atkinson at matkinson@bethlehem-pa.gov for more info and camp availability.



summer cont.

MOVIES IN THE PARK

The Bethlehem Movies in the Park is our annual summer series offering free movies on the big screen at a local park near you. The Movies are FREE to the public, including popcorn! We invite the neighborhoods to come out and enjoy a night under the stars to see both new and classic movies on our state of the art movie screen and surround sound system.

The popularity and success of Movies in the Park is due to the fact that it is free to the public, which is made possible by our great movie sponsors. We have 3 sponsorship levels available!

Title Sponsor: \$3,000 (All Movies)

- Name Recognition on all movie advertisements, correspondence and pre-show advertising.
- Banner, signage and table set up at all movies.

Event Sponsor: \$600 (1 Movie)

- Pre-show slideshow advertising
- Banners, signage and table set up night of movie.

Popcorn Sponsor: \$100 (1 Movie)

- Cover the cost of Popcorn for show
- Name recognition before show

Look for the official flyer and schedule soon.



TENTATIVE MOVIE SCHEDULE 2017

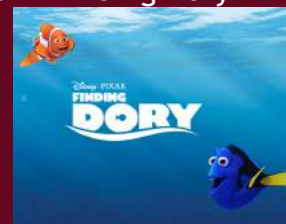
Tuesday, June 20th - The Jungle Book
@ L.G. Stewart Park



Tuesday, June 27th - The Batman Lego Movie
@ Clearview Park



Tuesday, July 11th - Finding Dory
@ Memorial Pool



Tuesday, July 18th - Central Intelligence
@ Elmwood Park



Wednesday, July 26th - Moana
@ Bernie Fritz Playground
*Bernie Fritz Night!



Tuesday, August 1st - Jason Bourne
@ The Bethlehem Rose Garden



Facilities

PAVILIONS

The City of Bethlehem offers 6 pavilions available for rental in 3 very different parks. There are two in Saucon Park, which boast plenty of open space, Saucon creek and play equipment. Two are located in South Mountain Park, which is a wooded area and home to an 18 “hole” disc golf course. The remaining two pavilions are located in Monocacy Park where you can enjoy a scenic walk along Monocacy Creek, and is a short distance away from the Bethlehem Municipal Golf Course and Memorial Pool. ****Monocacy Park will be under construction this summer and the last date for rentals will be July 16th*****

The City’s pavilions are available from April to October, 9am to dusk.

The pavilions are a perfect place to host a birthday party, family reunion, or even a wedding!

Reservation fees are as follows

Weekday	\$75 Resident	\$100 Non-resident
Weekend	\$100 Resident	\$150 Non-resident

To check pavilion availability, you can call us at 610-865-7081. To reserve a pavilion you can come to the Parks and Recreation Office in City Hall (Rm 506) or complete the form online. Payments must be made in full when making the reservations. No refunds. Pavilions are reserved on a first come, first serve basis.



South Mountain Upper Pavilion

FACILITY RESERVATIONS

Ice House

The Charles A. Brown Ice House is an indoor facility that can host birthday parties, dance showcases, performing arts, weddings and other events.



Fields

There are a variety of athletic fields available for rent, including soccer, rugby, softball and lacrosse.



Rose Garden

The Bethlehem Rose Garden is available for rental for weddings, pictures, and special events.

Illick’s Mill

The Historic Illick’s Mill in scenic Monocacy Park is now available for rent. Wedding receptions, birthday parties, bridal showers, and more are all welcome to be held at the Mill.



For more information, costs, and availability, please contact the Parks and Recreation office at 610-865-7081.

RESTORATION OF MONOCACY PARK

The City of Bethlehem has partnered with Wildlands Conservancy to restore the Monocacy Creek as it flows through Monocacy Park. The Monocacy Creek is classified by the Pennsylvania Department of Environmental Protection as a High Quality Coldwater Fishery, but unfortunately, the Creek is not as healthy as it should be, and it is therefore included on the State's list of impaired waterways.

As it flows through Monocacy Park, the Creek is significantly altered from its natural state and several rock dams. Growing residential and commercial development in the watershed has led to severe flooding damage and storm water management issues in the Park, and throughout the City. Railroad ties installed in the 1980's to control stream bank erosion are now being undermined and falling into the stream. The tall, stately sycamore trees along the Creek are leaning dangerously and their roots grow more and more exposed as stream banks continue to erode. The nearly complete absence of streamside, or riparian vegetation in the Park is greatly exacerbating erosion.

Many of Monocacy Park's historic sycamore trees are poised to fall, as erosion of the unstable streambanks continues to worsen. Mowing in the floodplain leads to dramatic streambank erosion and over-widening of the stream channel. The attempt to prevent further streambank loss by installing railroad ties is unsafe, ineffective, and aesthetically unappealing.

Starting in Mid-July this summer, the rail road ties will be removed and stream banks will be graded to a gentle slope. Native trees, shrubs, and wildflowers will be planted throughout the park, fish habitat enhancements will be created, and the Creek will be restored to its natural width. In addition to these improvements, the Appalachian Mountain Club has recently moved into the historic Illick's Mill. They will serve as stewards of Monocacy Park and will be a vital community partner during and after the Monocacy Creek restoration project.

The ultimate goals of this project are to improve water quality and in-stream habitat conditions, to restore the riparian and floodplain zone, and to create opportunities for resident and park goers to experience a little bit of nature in the City. The City envisions the restored Monocacy Park as a place where people can fish and play in a clear clean stream as a place where nature lovers can watch birds darting across the Creek, and where anyone can relax quietly under a shady tree.

The Monocacy Park restoration project is one of many environmental improvement efforts happening in the City. The City is also partnering with Wildlands Conservancy and the Lehigh Valley Planning Commission to complete an environmental assessment of the entire Monocacy Creek watershed. Stream habitat restoration projects are being implemented throughout the City, lawns are being converted to naturalized areas, and invasive plant species are being managed throughout the City parks system.

For more information, please contact Public Works at 610-865-7054.

The City of Bethlehem Recreation Department
10 East Church St. Bethlehem, PA 18018



@Bethlehem_Rec

Robert J. Donchez - Mayor
Jane Persa - Recreation Administrator
Mark Atkinson - Recreation Coordinator
Judy Stiles - Recreation Secretary



/BethlehemRec
/Bethlehemicerink